

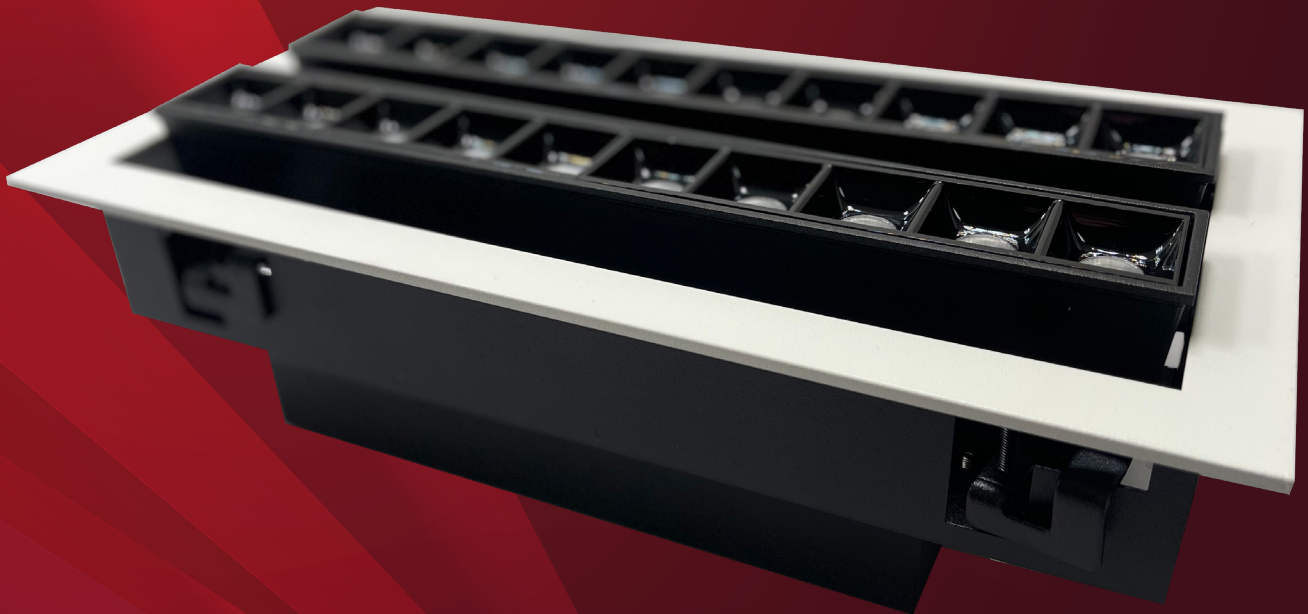


PARIFY
LIGHTING

MATRIX TWIN T101

Key Features

- Suitable for Ceilings and Cabinets
- Discrete, Narrow Luminaire
- High Performance



The Matrix Lighting Range is a family of architectural, high-performing downlights. The range includes two types of Matrix - a Fixed or Tilted Bezel. Due to their slimline design, the downlights are perfect for installing into cabinets and feature walls with discretion, which ensures the glare of the lights is kept to a minimum.

Using light creatively to drive sales

www.parifylighting.co.uk

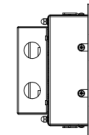
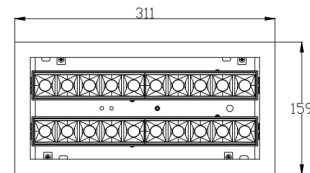
MATRIX TWIN T101



PARIFY
LIGHTING

Matrix Twin T101

Product	Nominal Power	Lumen Output	Lumen Efficiency	CRI	CCT	Beam Angles
Matrix Twin T101	40W	2796Lm	55.92Lm/W	>95	2700-7000K	15/24/36/48



cutout 295*145

Options

Driver	Complete with Driver
Input Voltage	220-240Vac
Certification	CE/ROHS/SASO

Parify Group Ltd, Unit 14, The Courtyard, Whitwick Business Park, Stenson Road, Coalville, Leicestershire, LE67 4JP

3 Year Guarantee for terms and conditions see www.parifylighting.co.uk

Retail Jeweller: UK Jewellery Awards: Finalist Service Provider of the Year 2021
 Retail Jeweller: UK Jewellery Awards: Finalist Service Provider of the Year 2019
 Leicester Mercury Business Awards: Excellence in Science & Technology 2019
 Leicester Mercury Business Awards: Excellence in Innovation 2019
 The National Association of Jewellers: Service Provider of the Year 2017

01509 323 111

sales@parify.co.uk

www.parifylighting.co.uk



PARIFY
GROUP